

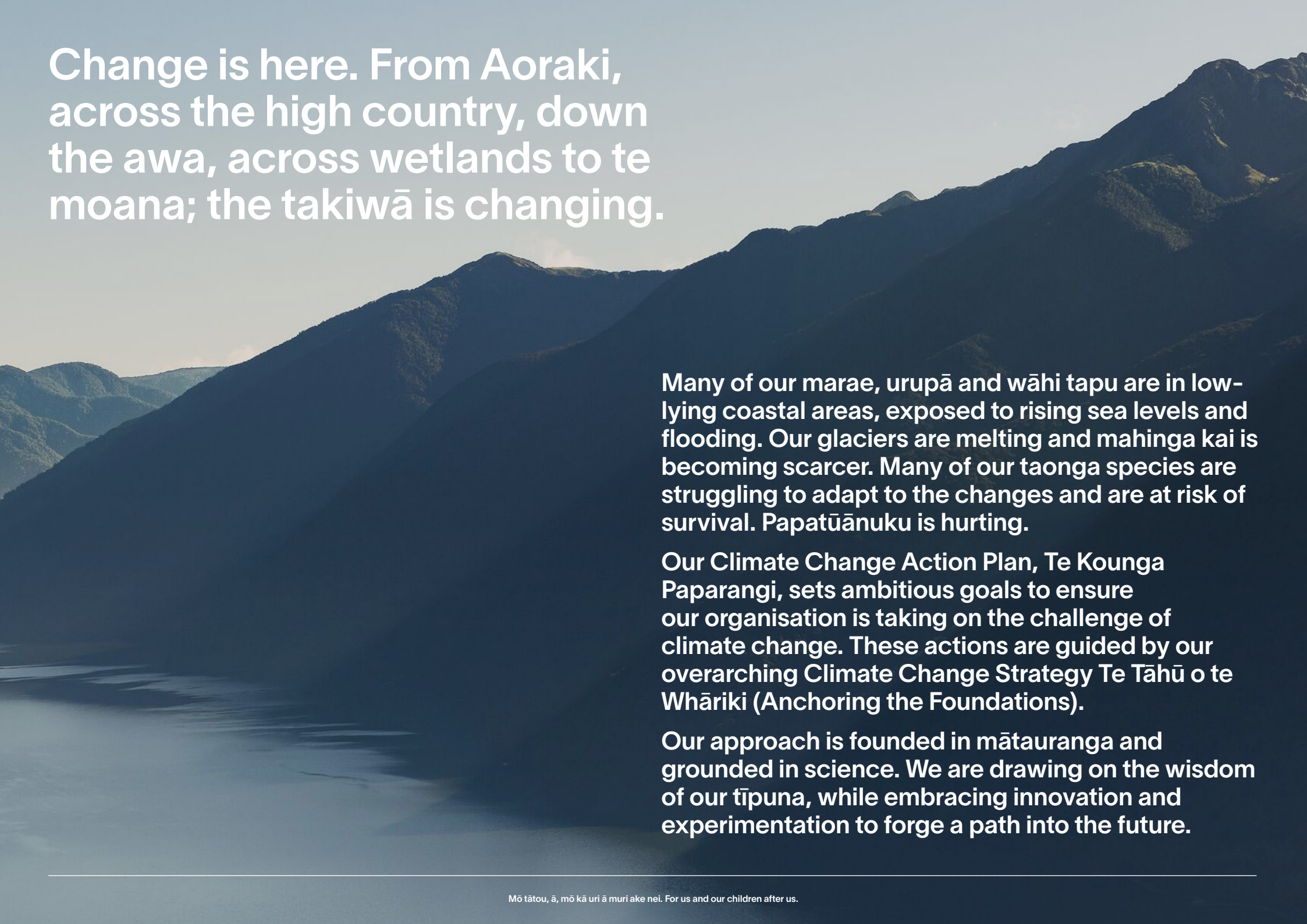
Te Kounga Paparangi Climate Action Plan



Cover Image:
Hollyford Wilderness Experience



Te Rūnanga o NGĀI TAHU



**Change is here. From Aoraki,
across the high country, down
the awa, across wetlands to te
moana; the takiwā is changing.**

Many of our marae, urupā and wāhi tapu are in low-lying coastal areas, exposed to rising sea levels and flooding. Our glaciers are melting and mahinga kai is becoming scarcer. Many of our taonga species are struggling to adapt to the changes and are at risk of survival. Papatūānuku is hurting.

Our Climate Change Action Plan, Te Kounga Paparangī, sets ambitious goals to ensure our organisation is taking on the challenge of climate change. These actions are guided by our overarching Climate Change Strategy Te Tāhū o te Whāriki (Anchoring the Foundations).

Our approach is founded in mātauranga and grounded in science. We are drawing on the wisdom of our tīpuna, while embracing innovation and experimentation to forge a path into the future.

Our Path to Change

Te Kōunga Pāparangi is grounded across eight pou – influencing every part of our operations for the better.

By taking action, we're embracing the opportunity for meaningful change. We're experimenting with innovative solutions across industries to mitigate climate change, build resilience, and promote sustainable business practices.



Discover the many ways we're taking on the challenge of climate change.

 <p>Emit No Greenhouse Gasses</p>	 <p>Marae & Whānau Resilience</p>
 <p>Careful Wai (Water) Use</p>	 <p>Operations Do Not Harm Environment</p>
 <p>Operations Do Not Harm Ecosystems</p>	 <p>Eliminate Waste</p>
 <p>Grow Renewable Energy</p>	 <p>Education & Communication</p>

Highlights – So Far

7

In partnership with Ngāi Tūāhuriri and the Government, we launched **Te Whenua Hou Te Whenua Whītiora**, a **7 year regenerative farming trial**, one of the largest in Aotearoa. The trial is working to reduce water requirements, greenhouse gas emissions, and nitrate leaching – and significantly increase soil carbon.



12x

Designed and launched our International Liquidity Portfolio – an investment screening initiative which sees **carbon emissions exposure 12 times lower** than market average.



40,000

Planted 40,000 native trees a year since 2015 and working towards restoring a native bird corridor between the Kā Tiritiri-o-te-Moana (Southern Alps) to Horomaka (Banks Peninsula).



150t

Unveiled a world-first innovation! Our electric jet boat prototype will revolutionise the industry by **saving 150 tonnes of CO₂e per year** for each jet boat converted to electricity.



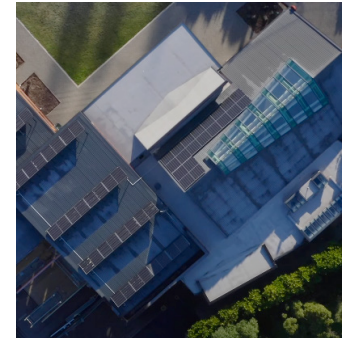
45%

Diverted 45% of farm waste from landfill through innovative agricultural plastics recycling scheme, PlasBack.



50%

50% marae have solar panels, with further opportunities for water, waste, and energy use improvements identified.



What Our Future Holds

We have bold, ambitious, and exciting targets for the future. Our goals demand much more from us in emissions reduction, water management, whānau support, and taonga species protection – and map our course to a better tomorrow for our people now, and for generations to come.

A few of our future aspirations include:



Supporting Ōnuku and Moeraki marae to enhance their climate adaptation and resilience planning while creating a blueprint for rūnanga to implement plans in their own rohe.



Working with Te Whare Wānanga o Ōtākou (University of Otago) to restore marine habitats in Whakaraupō Lyttelton Harbour and Otago coastline through native kelp re-seeding and pāua restoration – and removal of invasive Wakame (*Undaria pinnatifida*) seaweed.



Supporting ecosystem rejuvenation initiatives within our business units and across the takiwā.



Investing in agritech solutions for methane, phosphate and ecoli.



Implementing low carbon construction guidelines across our portfolio.



Leveraging climate risk insights across our organisation to drive strategic planning for our future.

Te Kounga Paparangi Climate Action Plan – A Summary



**Emit No
Greenhouse
Gasses**

Work to reduce operational and energy related greenhouse gas emissions to zero.



Achievements

- Benchmarked existing greenhouse gas emissions.
- Implemented initiatives to reduce car usage and air travel.
- Begun phasing out diesel and petrol fleet vehicles.
- Updated Travel Policy to require 100% EV or hybrid rentals and taxis.
- Requested key vendors to report on and begin to reduce key emissions.

2030 Goals

- 13% biogenic methane reduction (2017 baseline).
- 54.6% reduction in Scope 1 & 2 emissions (2017 baseline).
- 50% of Ngāi Tahu Tourism's jet boat fleet to be electric.
- Updated Travel Policy to prioritise 100% EV or hybrid rentals and taxis.
- All passenger vehicles electric.



**Marae &
Whānau
Resilience**

Empower our people to prepare for and thrive amidst climate change impacts.

Achievements

- Identified funding and partners to develop marae-centered climate response plans.
- Supported climate resilience for at-risk whānau.
- Worked with Government for whānau-inclusive climate resilience plans.
- Explored green-tech solutions for marae energy needs.



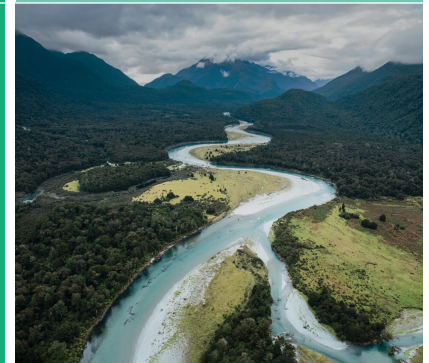
2030 Goals

- Marae centred climate change response plans will be in action and funded.
- All marae and Papatipu Rūnanga facilities technology upgraded for long-term resilience.



**Careful Wai
(Water) Use**

Use wai Māori sustainability to protect water quality and quantity for the people, soils, and ecosystems that depend on them.



Achievements

- Created water management plans.
- Upgraded several Ngāi Tahu Farming sites to variable rate irrigation with soil sensors.
- Surveyed aquatic biodiversity of waterways in forestry operations.
- Supported Papatipu Rūnanga and hapū in developing local interpretations of Te Mana o te Wai.
- Continued to work with the Crown on recognising of Ngāi Tahu rangatiratanga over freshwater.

2030 Goals

- All operations have water management plans in place.
- New agritech solutions incorporated at Ngāi Tahu Farming sites.
- Te Mana o te Wai and freshwater planning is aligned with Ngāi Tahu aspirations.
- Whānau, Papatipu Rūnanga, and Te Rūnanga are supported to manage climate change impacts on freshwater.



Operations Do Not Harm Environment

Work to eliminate emissions including gas, solid, and liquid emissions harmful to people or the environment.

Achievements

- Reduced synthetic fertiliser use YOY.
- Developed construction guidelines for carbon, water, energy, and waste management for whole-life sustainability.
- Completed soil reports for sites where hazardous goods are used near water supplies.



2030 Goals

- Investigate biofuel use across all business units.
- 100% of operations have hazardous waste and remediation plans.



Operations Do Not Harm Ecosystems

Protect areas where we are present and avoid negative impacts when moving into new areas.

Achievements

- Developed and prioritised ecosystem rejuvenation initiatives with mana whenua.
- Implemented high country station environmental strategy.
- Identified marine environment biodiversity initiatives.
- Reinstated Mahinga Kai Fund with climate focus for whānau protection and restoration.

2030 Goals

- Assess ecological monitoring data for improvements in locations' invertebrate populations, bird species diversity, and native flora and fauna.
- All new developments have ecosystem enhancement plans.
- Climate change response integrated into Iwi Management Plans and/or Mana Whakahono a Rohe agreements.



Eliminate Waste

Work to eliminate avoidable waste generation, and reuse, recycle or repurpose remaining waste.

Achievements

- Completed waste output baseline assessment and set reduction targets.
- Included end of life disposal requirements in purchasing.
- Developed print reduction plan.



2030 Goals

- 100% of consumer products have biodegradable/recyclable packaging.
- 100% of operations have waste reduction targets and monitoring.



Grow Renewable Energy

Aim for 100% renewable energy use and reduce greenhouse gas emissions from energy use in our own, and our partner operations.



Achievements

- Investigated solar panel installation and funding for TRoNT and whānau homes.
- Investigated options for green energy investment.

2030 Goals

- Audit and improve the warmth and dryness standards of whānau homes.
- Investigate waste to energy initiatives.



Education & Communication

Ensure this plan and our climate change approach is understood by Te Rūnanga o Ngāi Tahu, Papatipu Rūnanga and whānau – and that Te Kounga Paparangi is regularly updated.

Achievements

- Developed a Climate Emergency Communications and Engagement Plan.
- Created a Climate Change webpage on internal and external websites.
- Developed quarterly climate change learning sessions for kaimahi and Ngāi Tahu whānau.
- Formed a climate change working group to aid action delivery.

2030 Goals

- Establish fund to support solutions addressing climate change impacts.
- Videos and digital resources to support whānau with climate preparedness and sustainability actions.
- Bi-Annual Tribal Climate Change Symposium and rangatahi wānanga.
- Training and educational opportunities enable whānau to find climate-resilient employment.





Tiaki Budget

The creation of Te Kounga Paparangi has helped deepen our understanding of climate change and sustainability, and strengthen our commitment to positive change.

The plan's initiatives were designed to be agile and adaptive to accommodate new innovation and emerging global best practice.

Therefore in the coming financial year we will fine-tune and elevate our targets. Our focus will sharpen towards our most material impacts, improving our ability to recognise potential risks, track our progress, and impose clear accountability. By doing so, we aim to further entrench sustainability in our organisational DNA, ensuring that every decision made reverberates with our pledge to create a more sustainable and equitable future.

This next phase of maturity is the development of a Tiaki Budget. This will include metrics for waste, water, biodiversity and carbon.

2050 Targets – A Snapshot

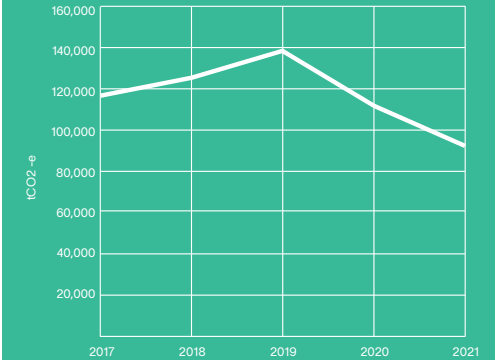
- Become **carbon neutral**.
- Ensure **Government accountability** for climate goals.
- Work with Government on climate change impacts on **Settlement assets, tribal lands, and resources**.
- **Positively impact whānau** affected by climate change.
- Create a **diverse and resilient asset base** contributing positively to the world reflecting our social, environmental and Ngāi Tahu aspirations.
- Implement initiatives to **minimise environmental changes** that impact Ngāi Tahu cultural identity.
- **Actively protect, restore and enhance** abundant places and species.



Discover the many ways we're taking on the challenge of climate change.

Our Greenhouse Gas Emissions Journey

We're targeting net-zero greenhouse gas emissions from operational activities and our energy consumption by 2050. Here's how we're tracking:



Targets align with the international Science-Based Targets Initiative methodology, and our annual results are externally audited and certified through Toitū Envirocare.

Managing Our Risk

Ngāi Tahu management regularly review and report on business risks, including climate change-related matters. These risks are then reviewed by leadership and our Boards and incorporated into planning and strategy.



Te Rūnanga o NGĀI TAHU