



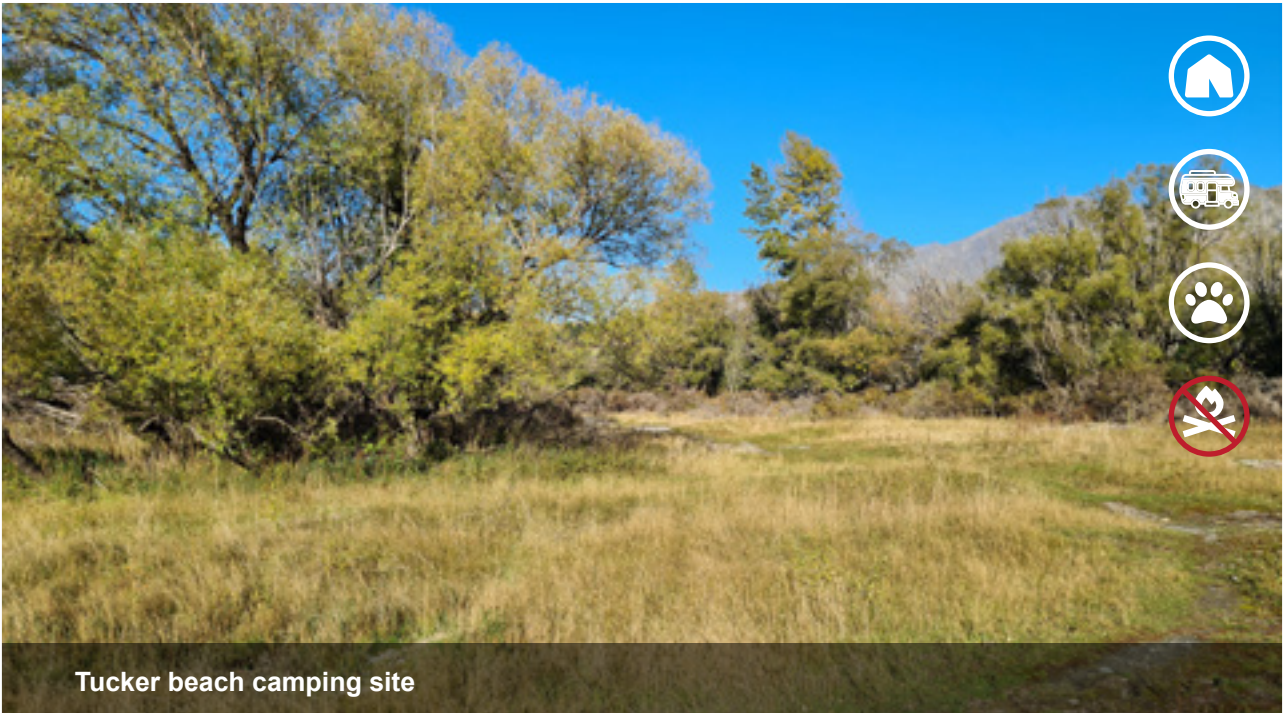
Nohoanga Site Information Sheet  
**Tuckers Beach, Shotover River**

---



# Nohoanga Site Information Sheet

## Tuckers Beach, Shotover River



### Getting there

- This site is within the Tucker Beach Wildlife Reserve, located at approximately 280 Tucker Beach Road, 15 mins drive north of Queenstown township.
- From State Highway 6 (Frankton-Ladies Hwy), turn off onto Tucker Beach Road (on the south side of the Shotover River bridge). Follow Tucker Beach Road for approximately 3mins / 2.8km until you reach a turn off for Tucker Beach Wildlife Reserve (see Photo 1 below). The access road is not clearly marked.
- If you reach the Tucker Beach Recreation Reserve, you have gone too far.

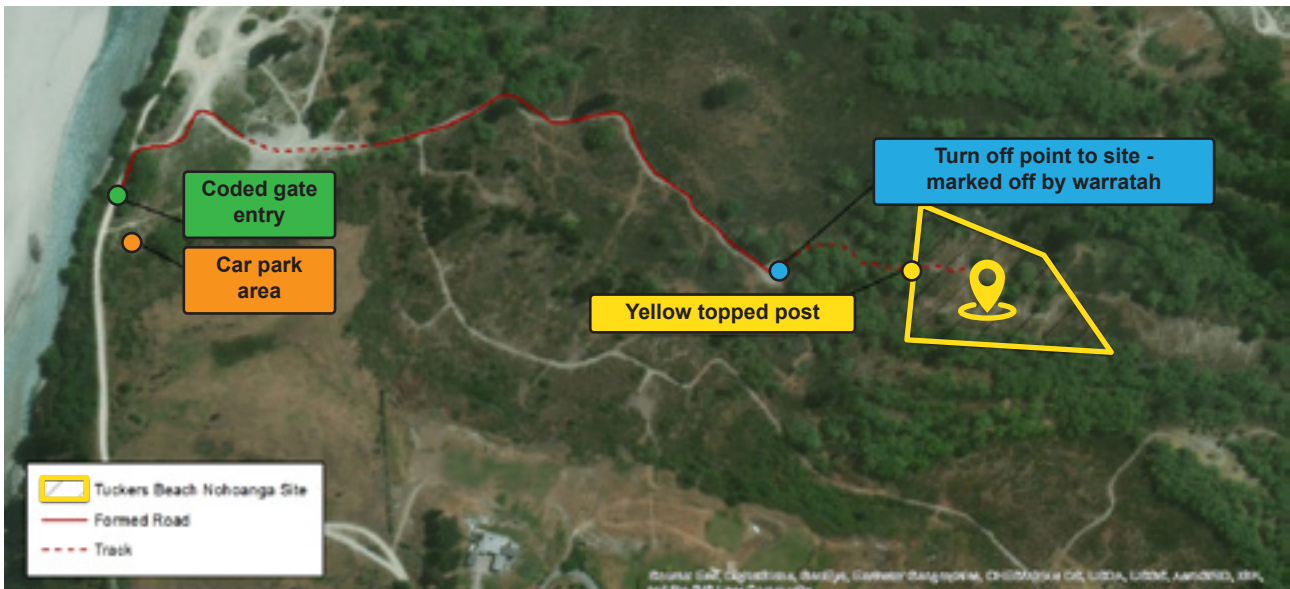




### Getting there (continued)

- A carpark has been created at the bottom of the hill within the reserve. The gate is locked with a coded padlock, nohoanga users will be given the access code with their authorisation.
- Users must ensure the gate is closed and locked at all times.
- Through the gate, the access route is marked with waratahs topped with blue triangles (see map and Photo 2 below). It is important nohoanga users follow this marked track, to reduce interference with nesting bird life.
- A post, with a yellow painted top, marks the nohoanga site (see photo below). The site boundary corners are also marked with small yellow painted posts. Nohoanga signage is near the entrance gate at the carpark.





### Physical appearance

- The nohoanga is a large and mostly flat area with good shelter provided by trees and bush.

### Vehicle access and parking

- There is excellent two-wheel drive vehicle access to the site, and plenty of space for parking.

### Facilities and services

- There are no facilities at the Tucker Beach nohoanga site. Site users will need to provide their own toilet (portaloos or chemical toilet) and shower facilities.
- Nohoanga site users are required to provide their own water supplies.
- The Queenstown Cycle Trail runs through the wider reserve.
- There is cell phone reception on this site.
- All rubbish and waste must be removed on departure. See key contacts below for details of refuse and dumping stations.

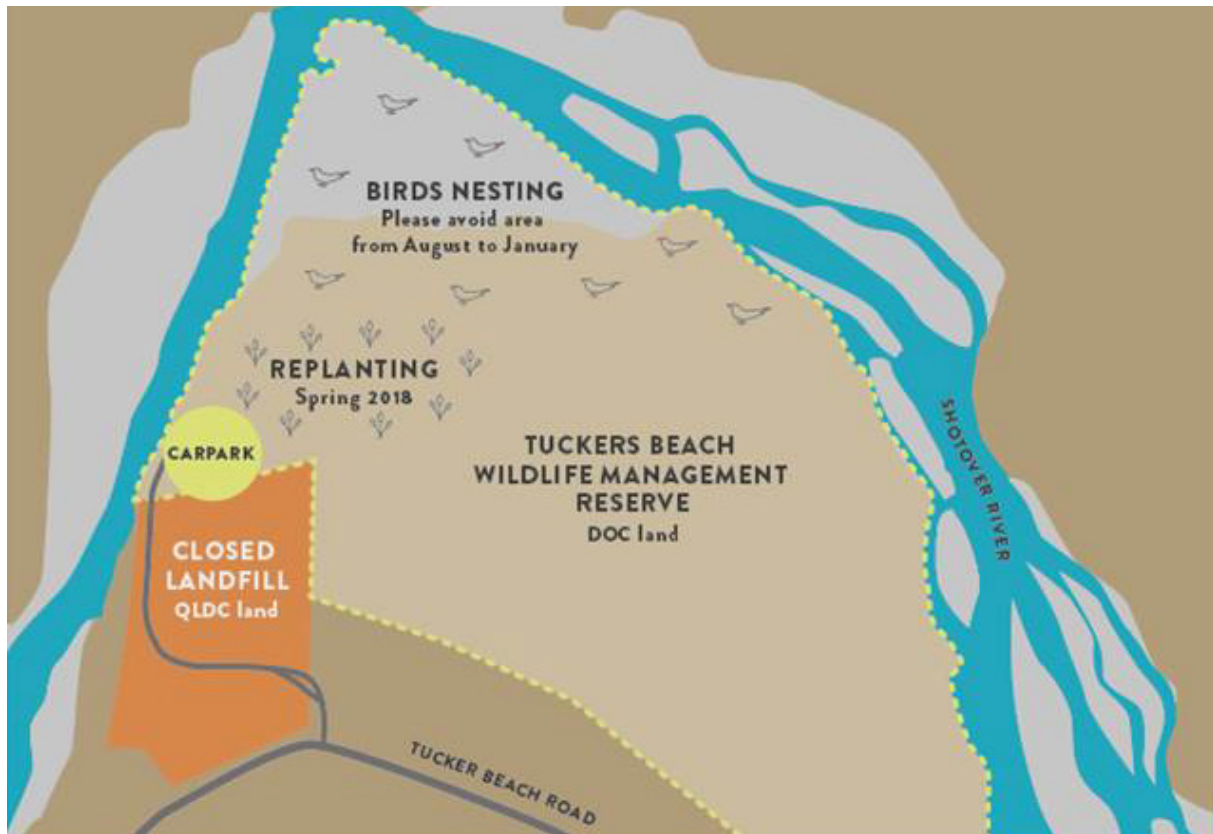
### Hazards

- Some rivers, lakes or waterways may have health warnings applied to them throughout the year for toxic algae and bacteria such as benthic cyanobacteria. Regional and District Councils will have up to date information on their websites regarding any waterway health warnings in place.
- Visit the Ngāi Tahu website: [www.ngaitahu.iwi.nz/environment/nohoanga](http://www.ngaitahu.iwi.nz/environment/nohoanga) for information regarding hazards.



## Site restrictions

- **Please note - this entitlement runs from 1 September through to 16 May each year.**
- The reserve is home to many wildlife species, including birds that use the area for nesting from August through to January.
- The map below shows the nesting areas, which are near the margins of the Shotover River, away from the nohoanga entitlement. Users are asked to take care not to disturb nesting birds when walking, and not to drive through the nesting area.



- Dogs must always be on a leash within the reserve to protect bird habitats.
- No Motorbikes or off-road driving/4WD driving
- No drones.
- No firearms/shooting.
- Strictly no fires.
- **By using the Tucker Beach nohoanga site you are agreeing to abide by these conditions.**



 **Key contacts**

<b>Emergency Services</b>	- Phone 111 (Police, Fire, Ambulance)
<b>Police Station</b>	- 11 Camp Street, Queenstown 03 441 1600
<b>Te Rūnanga o Ngāi Tahu</b>	- <b>Te Whare o Te Waipounamu</b> 15 Show Place, Addington 8024 PO Box 13-046 CHRISTCHURCH  0800 NOHOANGA nohoanga@ngaitahu.iwi.nz
<b>Department of Conservation</b>	- 50 Stanley St, Queenstown 03 442 7935
<b>Fish and Game (fishing licence outlets)</b>	- <a href="https://fishandgame.org.nz">https://fishandgame.org.nz</a>  - Otago Region Corner Harrow / Hanover Streets, Dunedin 03 477 9076
<b>Hospital / Doctors</b>	- Lakes District Hospital Frankton, Queenstown 03 441 0015
<b>Dumping Stations</b>	- Frankton Transfer Station, 110 Glenda Dr, Frankton - AllWaste Queenstown, 121 Gorge Rd, Queenstown - Smart Environment Ltd Queenstown, 118 Glenda Dr, Frankton - Queenstown BP Connect Public D/S Frankton Road - Queenstown Public D/S Cemetery Road - Roxborough Council Depot Teviot Street - Tapanui Public D/S Bushy Hill Road - Cromwell Public D/S Sargood Drive - Kidds Bush Reserve Lake Hawea
<b>Refuse Stations</b>	- Frankton Transfer Station 110 Glenda Dr, Frankton, Queenstown 03 451 0106  - Corner Ballantyne and Riverbanks Road, Wanaka 03 443 6063

